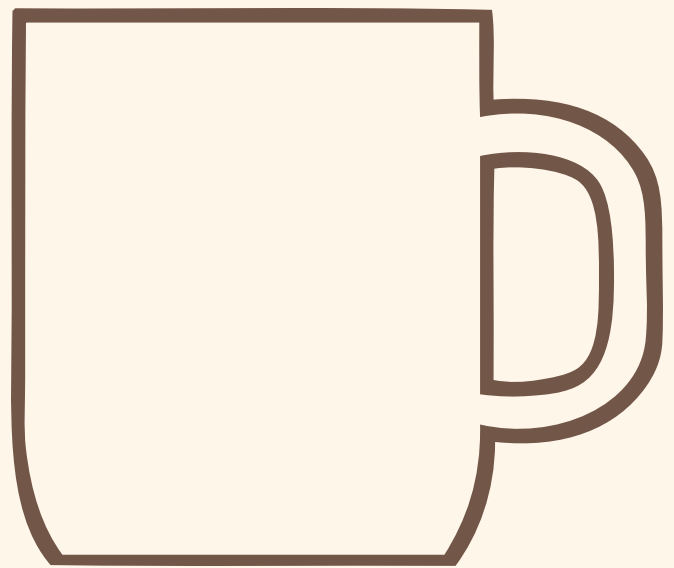
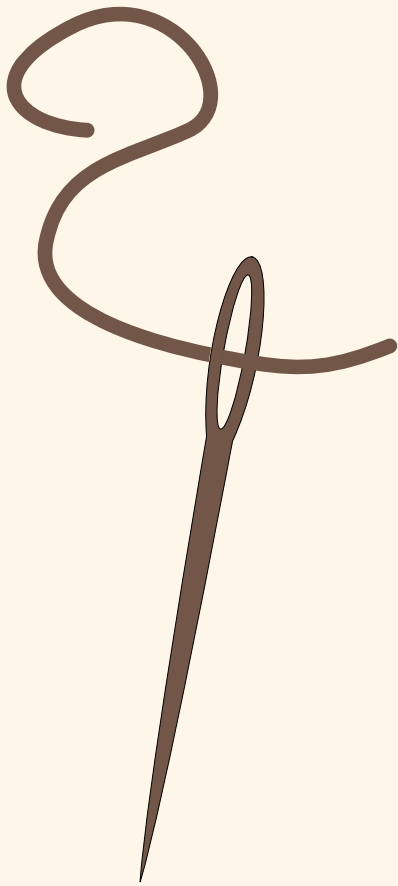


Coffee Cross Stitch

&

More



by EmnEllie



For cross stitch talk, free charts, and behind the scenes updates, subscribe to my newsletter

<https://emnelliart.substack.com/about>



Find my social media links, and the links to my other cross stitch charts here

<https://linktr.ee/emnellie>

Copyright 2022 by EmnEllie. Please do not copy, distribute, or use without permission

Table of Contents



Café



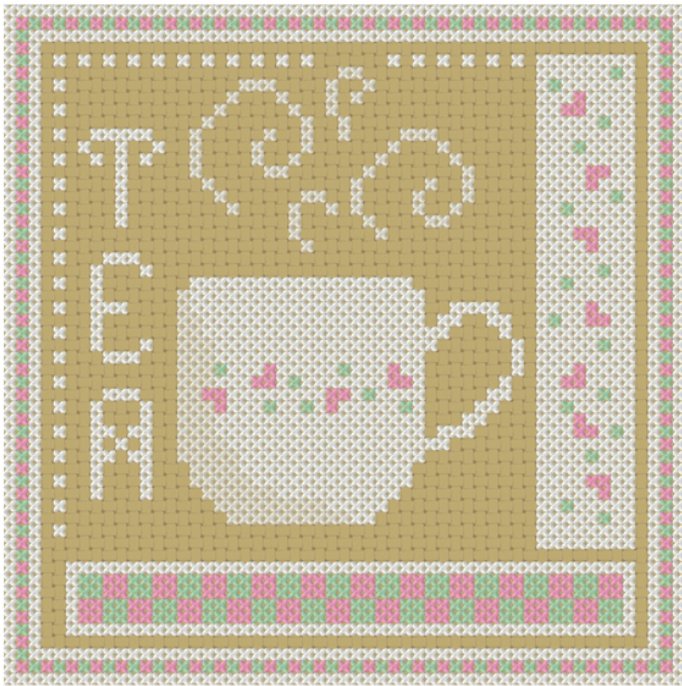
Pumpkin
Spice



Peppermint
Mocha



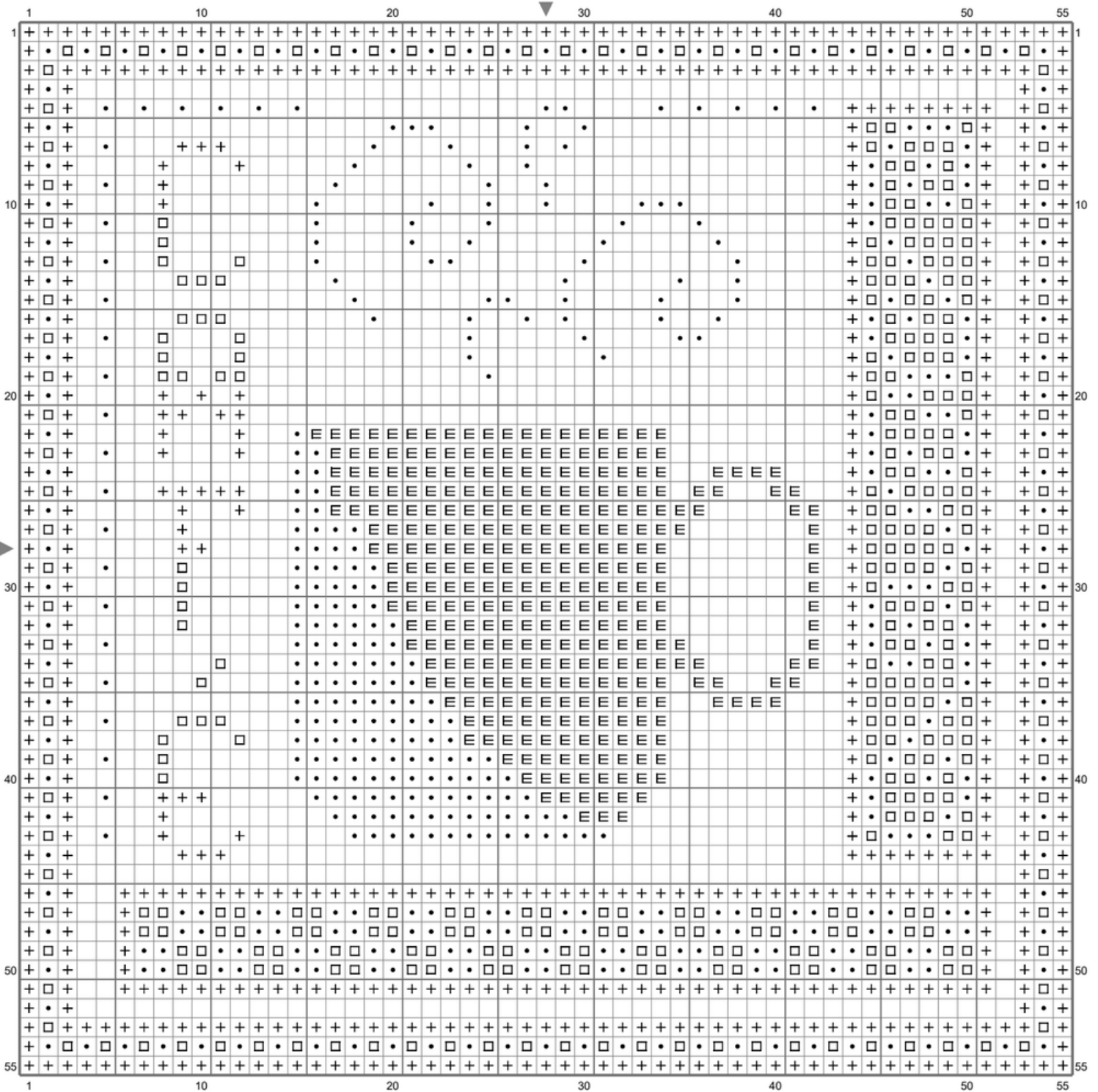
Cocoa



Tea Time

Café





Color Table (DMC)

Cross Stitch

- ⊕ 3371 (645 ct)
- ⊞ BLANC (315 ct)
- 839 (372 ct)
- ECRU (509 ct)

Stitch Count: 55w x 55h

Finished Size: 7.76 cm x 7.76 cm (18 ct./inch)

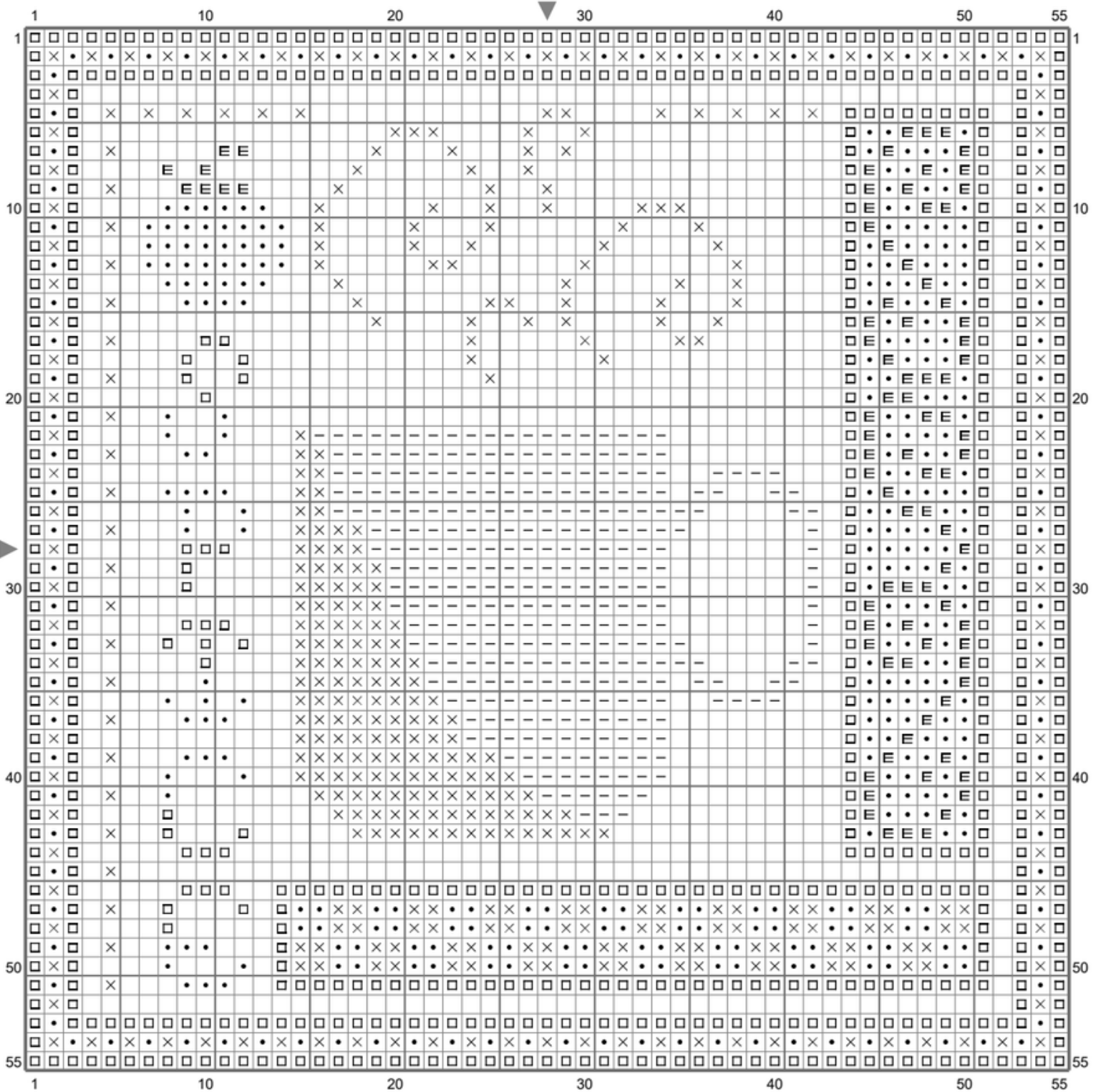
Cloth: Vintage Country Mocha Aida

of colors: 4 Colors

Cross stitch with 2 strands

Pumpkin Spice





Color Table (DMC)

Cross Stitch

- 920 (400 ct)
- 801 (623 ct)
- BLANC (315 ct)
- × ECRU (418 ct)
- E 936 (87 ct)

Stitch Count: 55w x 55h

Finished Size: 7.76 cm x 7.76 cm (18 ct./inch)

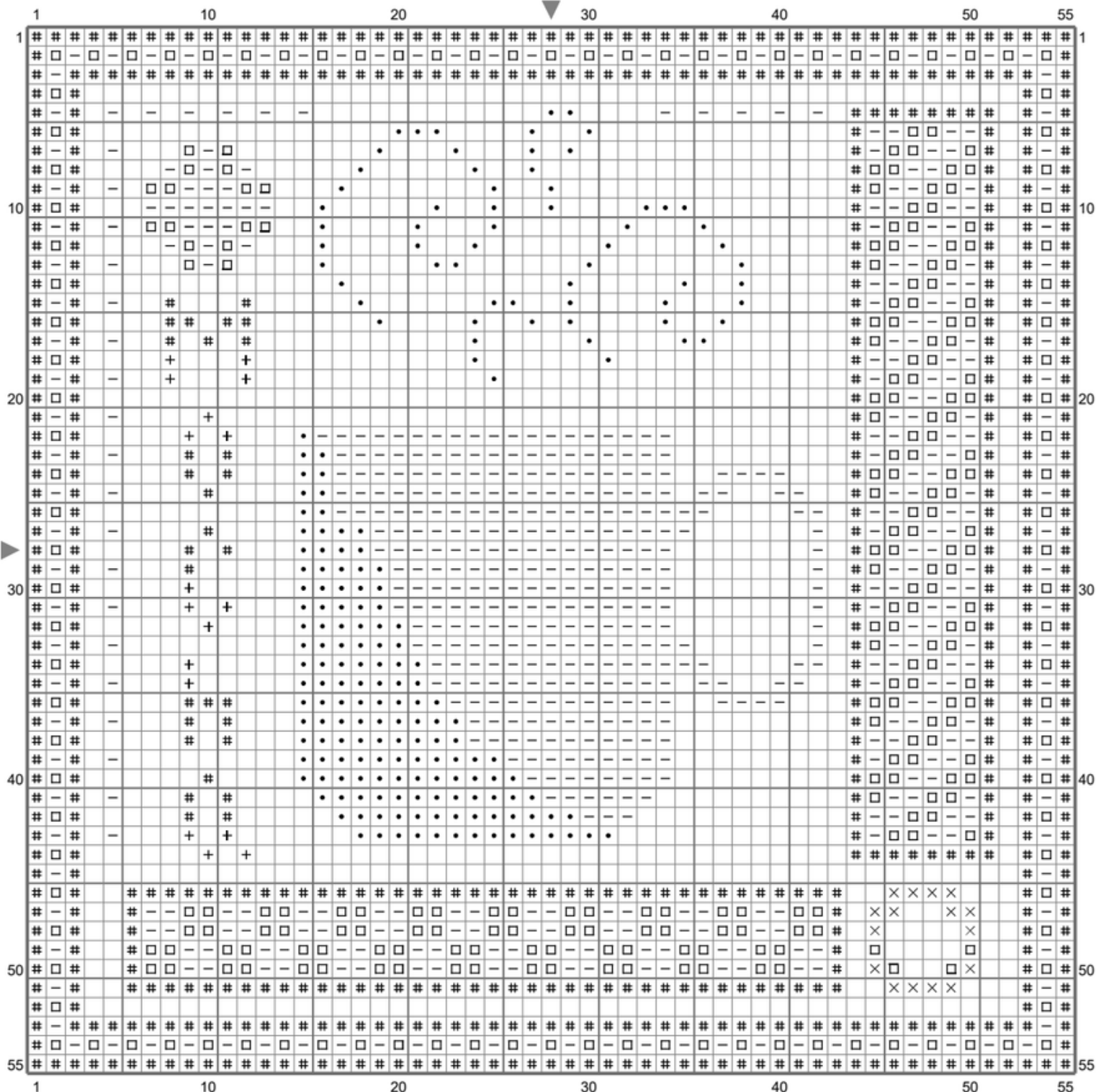
Cloth: Vintage Country Mocha Aida

of colors: 5 Colors

Cross stitch with 2 strands

Peppermint Mocha





Color Table (DMC)

Cross Stitch

- 3371 (622 ct)
- ECRU (208 ct)
- BLANC (657 ct)
- 304 (309 ct)
- × 936 (16 ct)
- ⊕ 839 (17 ct)

Stitch Count: 55w x 55h

Finished Size: 7.76 cm x 7.76 cm (18 ct./inch)

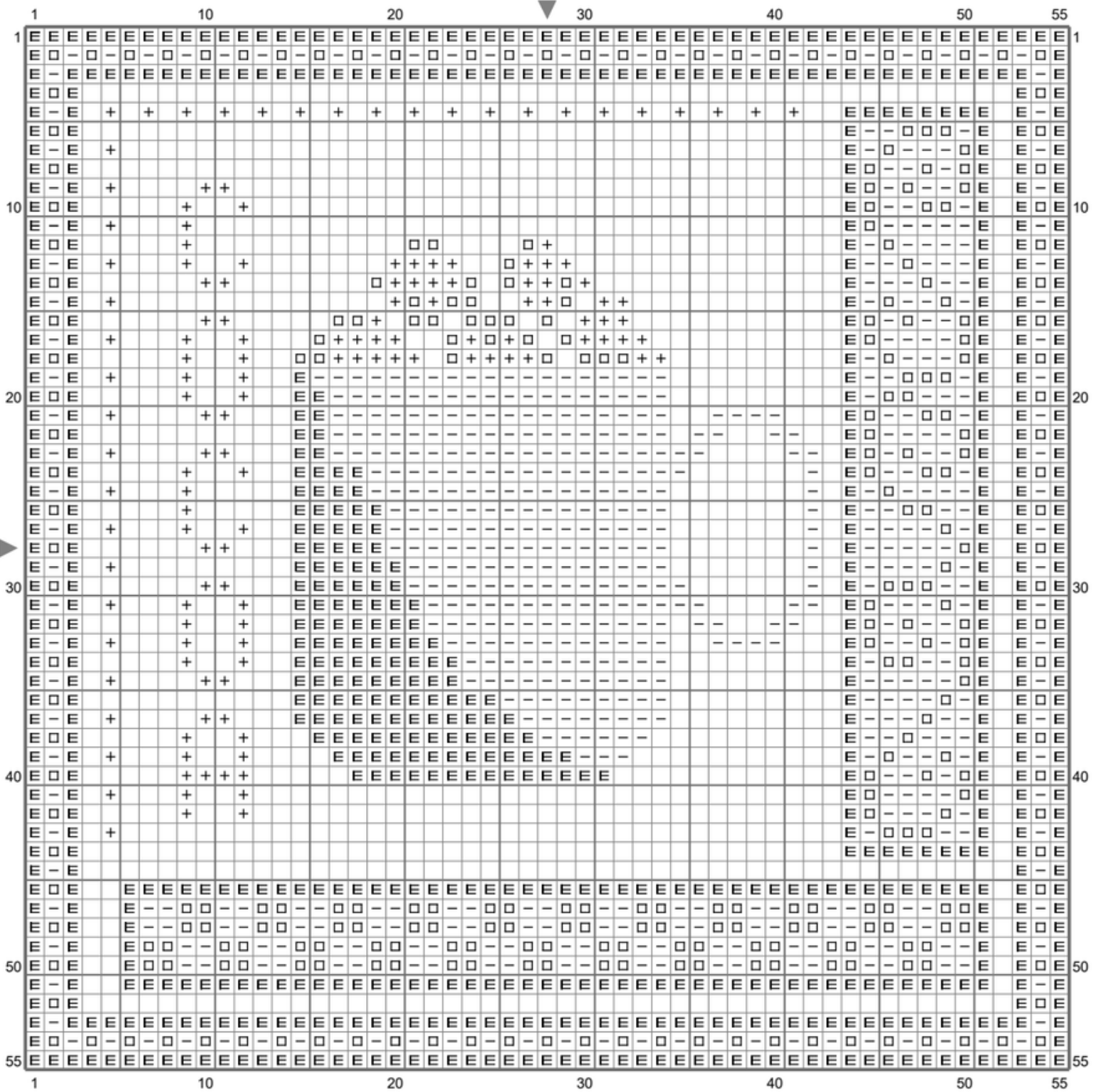
Cloth: Vintage Country Mocha Aida

of colors: 6 Colors

Cross stitch with 2 strands

Cocoa





Color Table (DMC)

Cross Stitch

- ⊕ BLANC (142 ct)
- ⊞ 3371 (754 ct)
- ECRU (303 ct)
- 839 (656 ct)

Stitch Count: 55w x 55h

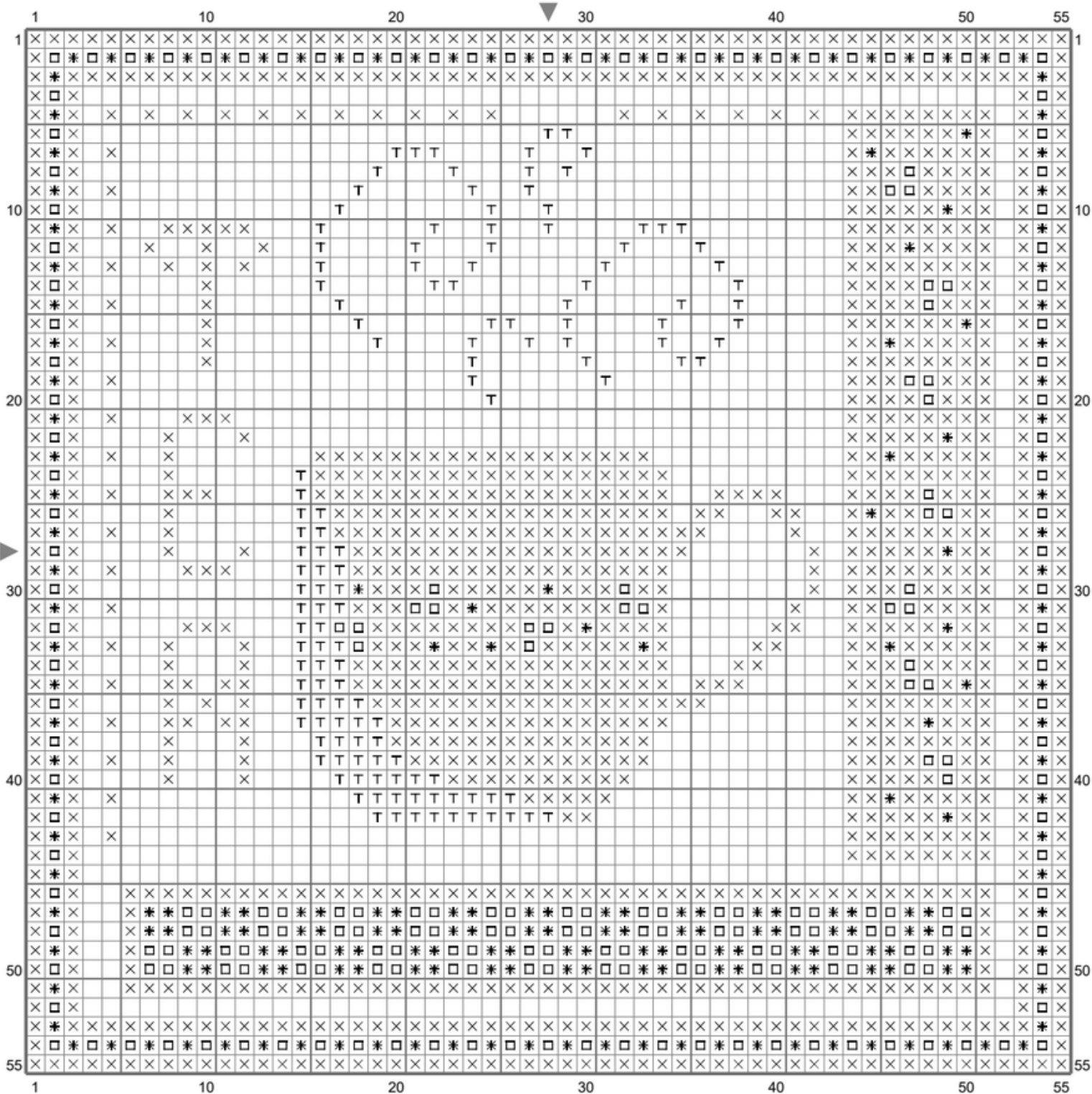
Finished Size: 7.76 cm x 7.76 cm (18 ct./inch)

Cloth: Vintage Country Mocha Aida

of colors: 4 Colors





Tea Time





Color Table (DMC)

Cross Stitch

-  BLANC (1204 ct)
-  ECRU (134 ct)
-  3708 (225 ct)
-  955 (215 ct)

Stitch Count: 55w x 55h
 Finished Size: 7.76 cm x 7.76 cm (18 ct./inch)
 Cloth: Vintage Country Mocha Aida
 # of colors: 4 Color